



MST Batch Converter

Batch Conversion Process

Overview

- **Supports wide range of File Formats**
(TIFF, JPEG, DICOM ETC...)
- **Support enabled for IBM proprietary formats**
(MODCA, IOCA, PTOCA)
- **Customizable User Interface**
- **Optimized for high speed batch conversions.**
- **Task Manager**
(Configure multiple batch conversion tasks to run in parallel)
- **Advance options**
(For selecting task specific conversion option, including details of preferred compression to be applied.)

Overview

- **Annotation Conversion**
- **Multi-Threaded Application**
- **Converting Sub-Directories**

File Format Conversions

Source

- BMP
- PCX
- DCX
- JPEG
- GIF
- IMG (IOCA)
- JPEG
- MO:DCA
- DICOM



Destination

- PDF
- BMP
- JPEG
- GIF
- IMG (IOCA)
- JPEG
- MO:DCA

Image Compressions

Decoding

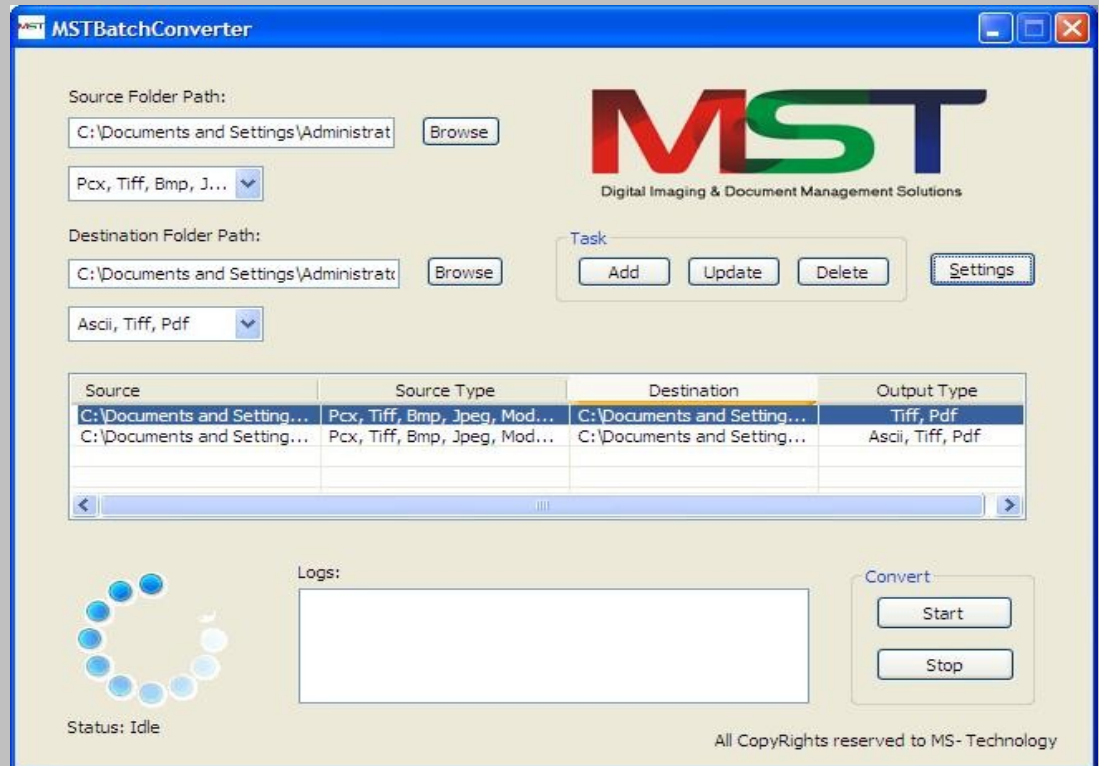
- JPEG
- CCITT G3
- CCITT G4
- HUFFMAN
- PACKED BITS
- BMP RLE
- LZW
- IBM_MMR
- JBIG-2
- ABIC
- JPEG2000
- G3-2D

Encoding

- FLATE
- CCITT G3
- CCITT G4
- LZW
- HUFFMAN
- PACKED BITS
- BMP RLE
- G3-2D
- JPEG

User Interface

- MULTI TASK CONFIGURATION
- EASY TO INSTALL ON SERVER OR REMOTE SYSTEMS.
- EASY TO USE USER INTERFACE



Optimized Conversion Techniques

➤ **Auto Compression Selection**

(HIGH SPEED CONVERSION)

- MST BATCH CONVERTER SELECTS THE FASTEST COMPRESSION TO BE APPLIED BASED ON THE SOURCE & DESTINATION DOCUMENT TYPE & BIT DEPTH

➤ **High Image Quality**

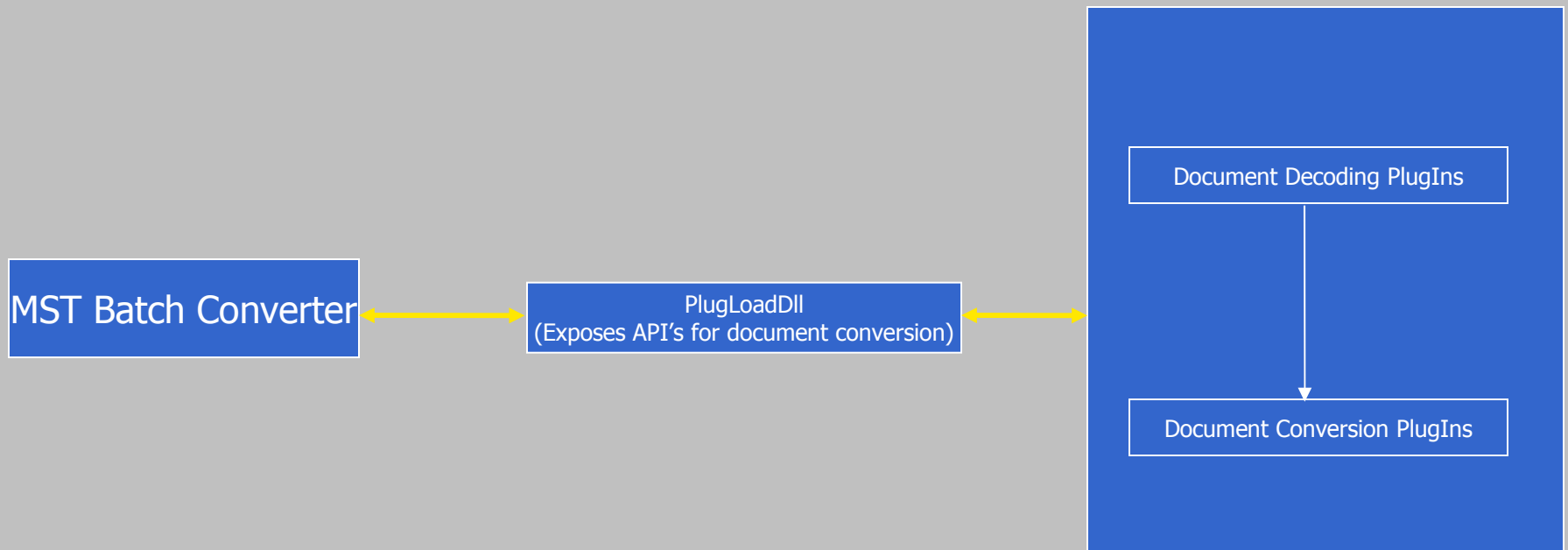
(BI-LINEAR OR CUBIC INTERPOLATION IS APPLIED ON THE CONFIGURED TASK BASED ON USER PREFERENCES.)

Document Conversions

- **Converting MODCA, IOCA, PTOCA documents to PDF, TIFF etc...**
- **PDF Annotation Conversion**
(MODCA ANNOTATIONS PRESENT IN SOURCE DOCUMENTS ARE CONVERTED TO PDF ANNOTATION OBJECTS, AND THEREFORE CAN BE EDITED & MODIFIED AFTER CONVERSION.)
- **Merging of Annotations with the Document**
(MODCA ANNOTATIONS ARE MERGED WITH THE DOCUMENT WHEN CONVERTED SUCH THAT THE BECOMES PART OF THE DOCUMENT.)
- **PTOCA to PDF Searchable Text:**
(PTOCA IS CONVERTED AS PDF TEXT OBJECTS, AND THEREFORE CAN FURTHER BE SEARCHABLE IN ACROBAT READER.)

Architecture

- **ATL COM Interfaces exposed as conversion API's**
- **Plug-In Based COM Architecture**
- **User Interface is designed & developed in VC++ MFC (Dialog Based Application).**
- **Built on Microsoft Visual Studio .NET 2005**





Document Conversion Chart

MS Technology, Inc							
BitDepth Conversion Chart							
Output Files		MODCA	TIFF	JPEG	BMP	GIF	PDF
Input Files	Bit Depth						
MO:DCA	1Bit modca	NA	YES(8Bit)	YES(8bit)	YES(4Bit)	YES(8bit)	YES
	4Bit modca	NA	YES(4Bit)	YES(8bit)	YES(8Bit)	YES(8bit)	YES
	8Bit modca	NA	YES(8Bit)	YES(8bit)	YES(8Bit)	YES(8bit)	YES
	24Bit modca	NA	YES(24Bit)	YES(24Bit)	YES(24Bit)	YES(8bit)	YES
TIFF	1Bit tiff	YES(1Bit)	NA	YES(8bit)	YES(4Bit)	YES(8bit)	YES
	4Bit tiff	YES(24Bit)	NA	YES(8bit)	YES(8Bit)	YES(8bit)	YES
	8Bit tiff	YES(8Bit)	NA	YES(8bit)	YES(8Bit)	YES(8bit)	YES
	24Bit tiff	YES(24Bit)	NA	YES(24Bit)	YES(24Bit)	YES(8bit)	YES
BMP	1Bit bmp	YES(1Bit)	YES(1Bit)	YES(8bit)	NA	YES(8bit)	YES
	4Bit bmp	YES(24Bit)	YES(4Bit)	YES(8bit)	NA	YES(8bit)	YES
	8Bit bmp	YES(24Bit)	YES(8Bit)	YES(8bit)	NA	YES(8bit)	YES
	24Bit bmp	YES(24Bit)	YES(24Bit)	YES(24Bit)	NA	YES(8bit)	YES
JPEG	8Bit Jpeg	YES(24Bit)	YES(8Bit)	NA	YES(24Bit)	YES(8bit)	YES
	24Bit Jpeg	YES(24Bit)	YES(24Bit)	NA	YES(24Bit)	YES(8bit)	YES
GIF	1Bit Gif	YES(8Bit)	YES(1Bit)	YES(24Bit)	YES(24Bit)	NA	YES
	8Bit Gif	YES(8Bit)	YES(8Bit)	YES(24Bit)	YES(24Bit)	NA	YES
DICOM		NA	NA	YES(8Bit)	NA	NA	YES



**For more information please contact us at
info@ms-technology.com**

P.O. Box 471843

Charlotte, NC 28247

Tel: (704) 544 – 3403

Fax: (704) 544 – 0262